

Drainex 600 Drainage



Submersible monobloc pumps, Vortex system

Applications

In water treatment facilities.
 Pressurised drainage systems.
 Drainage of faecal water from housing and garages.
 Drainage for water with solids in public establishments, restaurants, etc.
 General drainage systems in industry, farms, livestock farms, excavations, garages and civil engineering works. Drainage of cesspits and septic tanks. Atex version for installing in the facilities described in the Atex regulations (II 2G d II B T4).

Materials

Pump body and impeller in cast iron.
 Double mechanical seal: on the pump side in silicon carbide and on the motor side in graphite/aluminium oxide with an intermediate oil chamber. The motor shaft is not in contact with water.
 AISI 304 stainless steel screws.
 O-rings in NBR.

Motor

Asynchronous, 2 pole.
 IP 68 protection. Class F insulation.
 Continuous operation (fully submerged).
 Atex II 2G version. Ex d II B t4.
 Atex version is supplied with a humidity sensor and thermal protection in case the motor overheats.
 To ensure full protection, we recommend you install the appropriate protection and control panels.

Equipment

Supplied with 10 m of power cord.
 Level switch (optional, for connecting to electrical panel).

Limitations

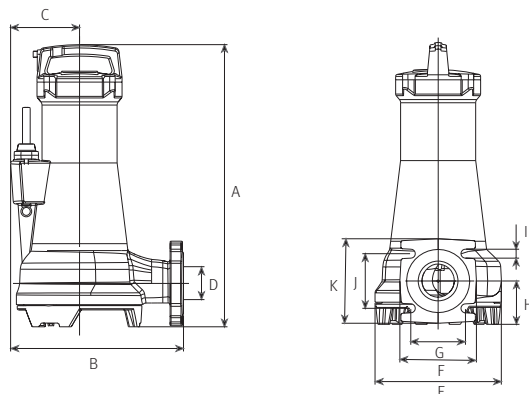
Solids passage \varnothing up to 40 mm with a DN 50 impeller.
 Maximum immersion depth 9 metres.
 Maximum number of start-ups 15 per hour.
 Maximum temperature: 40 °C.



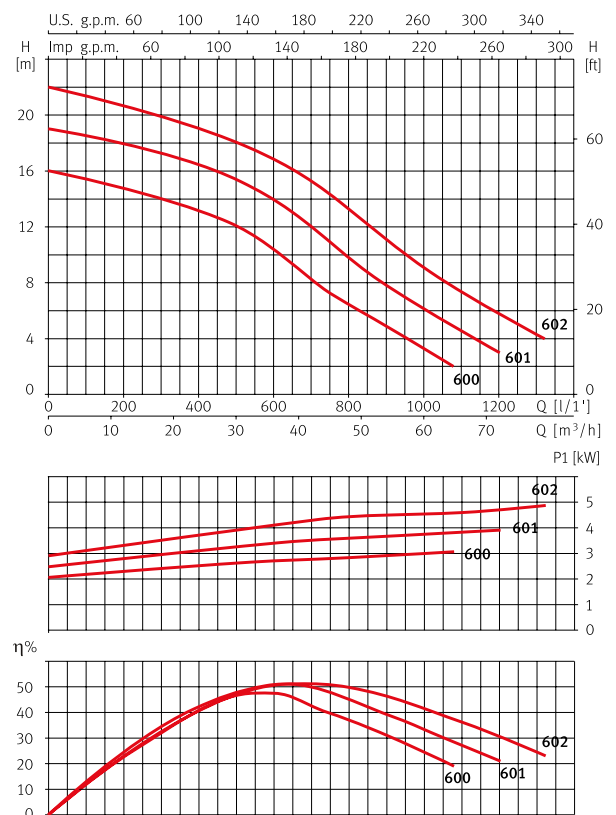
Dimensions and weights

Model	A	B	C	D	E	F	G	H	I	J	K	kg
Drainex 600	567	348	139	Ø65	254	154	110	87	18	110	170	60
Drainex 601	567	348	139	Ø65	254	154	110	87	18	110	170	60
Drainex 602	567	348	139	Ø65	254	154	110	87	18	110	170	60

Impeller ext. \varnothing : Drainex 600: 125 mm. Drainex 601: 135 mm. Drainex 602: 145 mm.



Performance curves at 2900 rpm

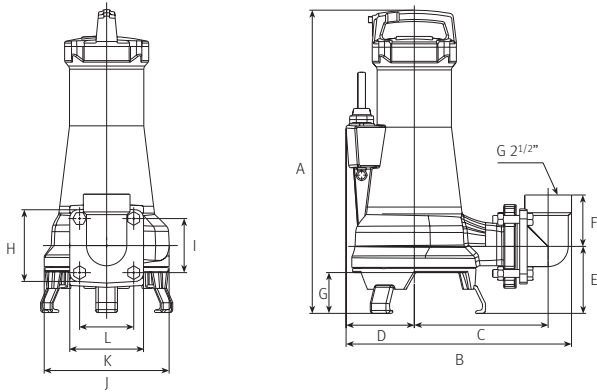


Hydraulic performance table

Model	I (A)	P1 (kW)	P2		l/min	200	400	600	800	1000	1200	1300
	3~400 V	3~	(kW)	(HP)								
Drainex 600	5,7	3	3,7	5	mwc	14,8	13,3	10,4	6,3	3,4		
Drainex 601	6,8	3,9	3,7	5		18	16,3	14	9,8	6	3,1	
Drainex 602	8,1	4,8	3,7	5		21	19	16,8	13,3	9	5,8	4,3

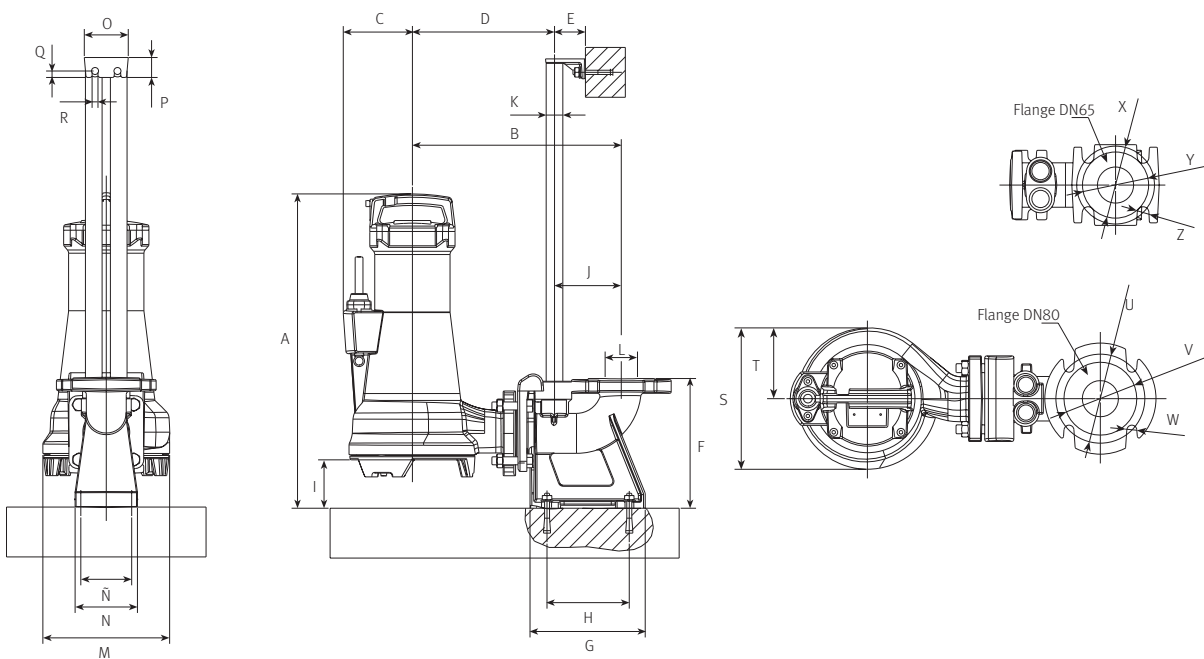
Portable version

A	B	C	D	E	F	G	H	I	J	K	L
616	458	272	139	136	105	83	144	110	254	150	110



Fixed version

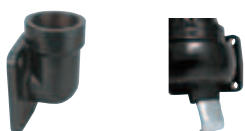
A	B	C	D	E	F	G	H	I	J	K	L	M	N	Ñ	O	P	Q	R	S	T	U	V	W	X	Y	Z
630	419	319	285	62	260	231	165	97	134	1"	Ø65	254	125	102	88	40	13	12	254	127	Ø60	Ø133	Ø18	Ø140	Ø120	Ø21



Accesorios

Portable version

DR7 Kit



90° elbow at 2 1/2"

Stainless steel feet

Fixed version

DR4 Kit

DN 65 (flange 65)

DIN 2501 PN16

ANSI 150 2 1/2"



Support base with elbow for automatic anchoring

Clamping flange

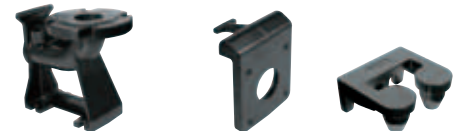
Upper anchoring on double guide tube

DR5 Kit

DN 65 (flange 80)

DIN 2501 PN16

ANSI 150 2 1/2"



Support base with elbow for automatic anchoring

Clamping flange

Upper anchoring on double guide tube