

Drainex 400 Drainage



Submersible monobloc pumps, Vortex system

Applications

In water treatment facilities.
 Pressurised drainage systems.
 Drainage of faecal water from housing and garages.
 Drainage for water with solids in public establishments, restaurants, etc.
 General drainage systems in industry, farms, farms, livestock farms, excavations, garages and civil engineering works. Drainage of cesspits and septic tanks. Atex version for installing in the facilities described in the Atex regulations (II 2G d II B T4).

Materials

Pump body and impeller in cast iron.
 Double mechanical seal: on the pump side in silicon carbide and on the motor side in graphite/aluminium oxide with an intermediate oil chamber. The motor shaft in AISI 420 stainless steel.
 AISI 304 stainless steel screws.
 O-rings in NBR.

Motor

Asynchronous, 2 pole. IP 68 protection.
 Class F insulation.
 Continuous operation (fully submerged).
 Atex II 2G version. Ex d II B T4.
 Atex version is supplied with a humidity sensor and thermal protection in case the motor overheats.
 To ensure full protection, we recommend you install the appropriate protection and control panels.

Equipment

Supplied with 10 m of power cord.
 Level switch (optional, for connecting to electrical panel).

Limitations

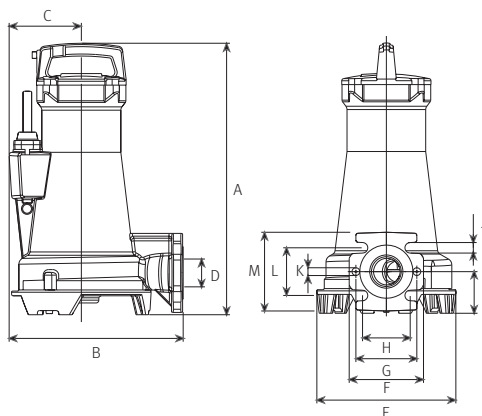
Solids passage Ø up to 40 mm with a DN 50 impeller.
 Maximum immersion depth 9 metres.
 Maximum number of start-ups 15 per hour.
 Maximum temperature: 40 °C.



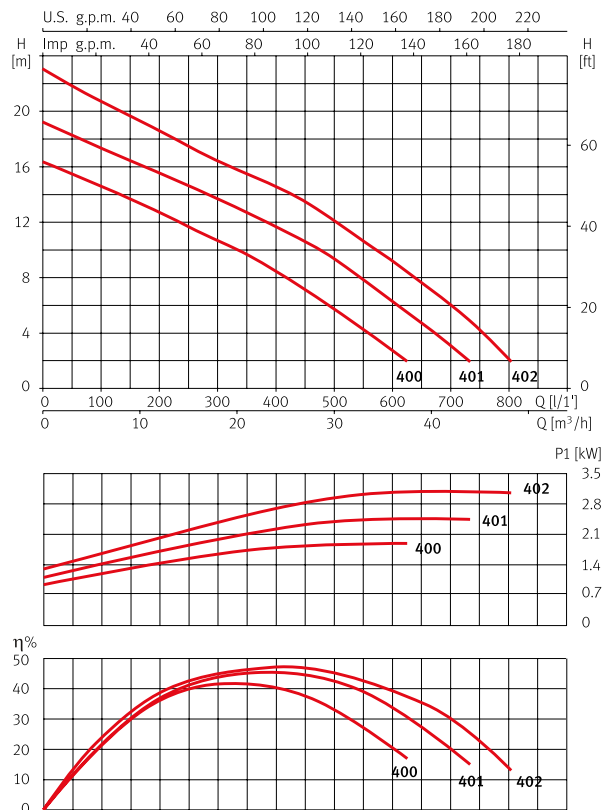
Dimensions and weights

| Model | A | B | C | D | E | F | G | H | I | J | K | L | M | kg |
|-------------|-----|-----|-----|-----|-----|-----|-----|----|----|----|-----|----|-----|----|
| Drainex 400 | 488 | 313 | 130 | Ø50 | 251 | 134 | 110 | 86 | 75 | 19 | Ø14 | 86 | 142 | 45 |
| Drainex 401 | 488 | 313 | 130 | Ø50 | 251 | 134 | 110 | 86 | 75 | 19 | Ø14 | 86 | 142 | 45 |
| Drainex 402 | 488 | 313 | 130 | Ø50 | 251 | 134 | 110 | 86 | 75 | 19 | Ø14 | 86 | 142 | 45 |

Impeller ext. Ø: Drainex 400: 115 mm. Drainex 401: 125 mm. Drainex 402: 136 mm.



Performance curves at 2900 rpm

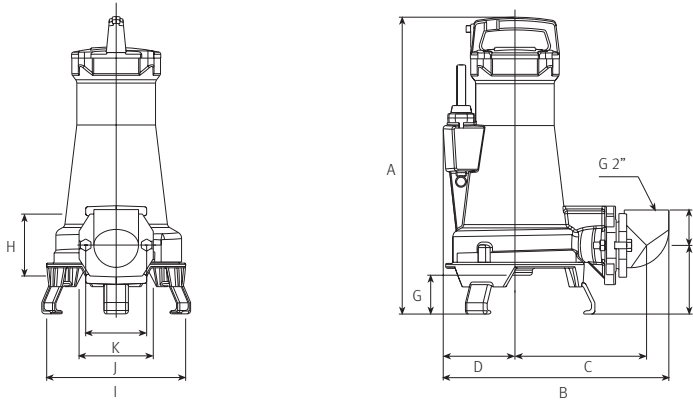


Hydraulic performance table

| Model | I (A) | P1 (kW) | P2 | | l/min | 100 | 200 | 400 | 500 | 600 | 700 | 800 | |
|-------------|---------|---------|------|------|-------|-------------------|------|------|-----|-----|-----|-----|----|
| | 3~400 V | 3~ | (kW) | (HP) | | m ³ /h | 6,0 | 12 | 24 | 30 | 36 | 42 | 48 |
| Drainex 400 | 4,1 | 1,9 | 2,6 | 3,5 | mwc | 14,6 | 12,7 | 8,3 | 5,9 | 2,8 | | | |
| Drainex 401 | 4,8 | 2,45 | 2,6 | 3,5 | | 17,3 | 15,5 | 11,6 | 9,3 | 5,2 | 3 | | |
| Drainex 402 | 5,6 | 3,1 | 2,6 | 3,5 | | 20,7 | 18,6 | 13,7 | 12 | 9,3 | 5 | 2 | |

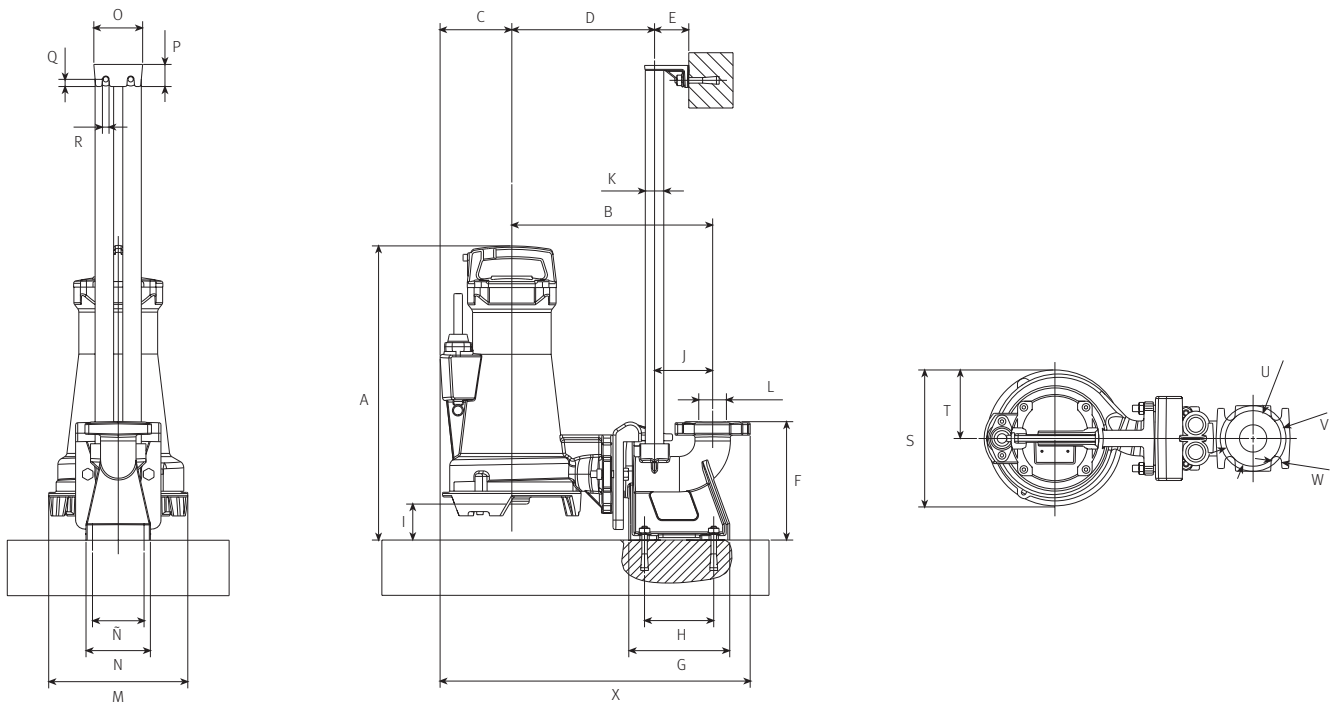
Portable version

| A | B | C | D | E | F | G | H | I | J | K |
|-----|-----|-----|-----|-----|----|----|-----|-----|-----|-----|
| 537 | 408 | 238 | 130 | 124 | 64 | 70 | 110 | 251 | 134 | 110 |



Fixed version

| A | B | C | D | E | F | G | H | I | J | K | L | M | N | Ñ | O | P | Q | R | S | T | U | V | W | X |
|-----|-----|-----|-----|----|-----|-------|-----|----|-----|----|-----|-----|-----|----|----|----|----|----|-----|-----|-----|-------|----|-----|
| 532 | 363 | 130 | 258 | 62 | 214 | 182,5 | 125 | 65 | 105 | 1" | Ø50 | 251 | 116 | 93 | 88 | 40 | 13 | 12 | 251 | 125 | 100 | 120,5 | 19 | 561 |



Accessories

Portable version

DR3 Kit
DN 50 (flange 50)



Support base with elbow for automatic anchoring

ANSI 150 2"



Upper anchoring on double guide tube

Fixed version

DR6 Kit



90° elbow at 2"



Stainless steel feet